



Find your place in Denton, Texas!

Connected. Creative. Sustainable. Competitive. With a highly educated, musically-inclined population of 148,000, it's no wonder Denton is the 25th fastest-growing city in the country!

ACCESS TO ANYWHERE

Situated at the intersection of Interstate 35 East and West, Denton is 30 minutes from Dallas/Fort Worth International and Dallas Love Field Airports. Denton also operates the busiest general aviation airport in Texas five miles from the City's downtown.

WORKFORCE OF THE FUTURE

Denton is home to a combined 55,000 students who attend the University of North Texas and Texas Woman's University, the first female-focused university system in the nation. North Central Texas College specializes in industry-focused workforce training. In addition, Denton ISD's LaGrone Advanced Technology Complex prepares high school students for careers in engineering, graphic design, and welding.

More than 455,600 workers are in Denton County. Overall, the Dallas/Fort Worth MSA has a workforce of 3.7 million.

INDUSTRIAL DESTINATION

Peterbilt Motors Company, Jostens and Sally Beauty call Denton their headquarters or primary manufacturing center. In addition, the City attracts distribution centers of Target, WinCo Foods, Fastenal, Aldi and Lowe's.

100% RENEWABLE ENERGY

Denton Municipal Electric (DME) is the 6th-largest municipally-owned utility in Texas, with a 353-megawatt peak load. DME's uptime has been 99.99%, and all energy provided to the facility is 100% renewable.

LIVE MUSIC HUB

In Denton, you can find jazz, country, blues, metal, and rock, all performed by talented local musicians and touring bands from around the country.

ADDITIONAL MARKETING DOCUMENTS (CLICK TO DOWNLOAD)

[Demographics](#)

[Community Overview](#)

[Denton Stats](#)


[Workforce Resources](#)

Check us out online at dentonedp.com to learn more about our City, our people, and the benefits of expanding to Denton. Email info@dentonedp.com or call (940) 382-9693 to continue the conversation!

WHY DENTON

CONNECTED

Intersection of
I-35 E & W



DIRECT ACCESS VIA
21 MILE
PUBLIC TRANSIT LINE



Denton Enterprise Airport
BUSIEST
General Aviation
IN TEXAS



30
MINUTES TO
DFW AIRPORT &
DALLAS LOVE FIELD



COMPETITIVE


TEXAS WOMAN'S UNIVERSITY:
FIRST UNIVERSITY SYSTEM WITH A
WOMAN
-FOCUSED MISSION



\$84M
ANNUAL RESEARCH
SPENDING BY THE
UNIVERSITY OF NORTH TEXAS



38.9%
OF ADULTS HAVE A
BACHELORS, COMPARED
TO 29.9% IN THE STATE



SINCE 2010, DENTON'S
POPULATION HAS INCREASED
31%



CREATIVE


12+
LIVE MUSIC VENUES



53 LANGUAGES
SPOKEN IN DENTON ISD




DENTON COUNTY IS THE
2ND HEALTHIEST
COUNTY IN
TEXAS



\$40B
DENTON COUNTY
GROSS REGIONAL PRODUCT




MORE THAN
55K
UNIVERSITY STUDENTS
LIVE IN DENTON



SUSTAINABLE


DENTON MUNICIPAL ELECTRIC
PROVIDES
100%
RENEWABLE ENERGY



4K
ACRES
OF PARKS &
OPEN SPACE



DENTON MUNICIPAL
ELECTRIC HAS A
99.9%
UPTIME



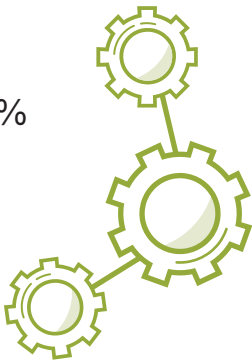
1.9M
WORKFORCE
WITHIN 45 MINS



DENTON DEMOGRAPHICS



Population Estimate 2021 - 148,146
Population Growth Rate 2010-2021- 30.7%
Median Age - 29.5
Median Household Income - \$62,542
Regional Workforce - 3.8M



BUILD HERE

Lease Rates (per SF)
Office - \$24.17
Industrial - \$9.40
Retail - \$19.87

800 new Certificates
of Occupancy last year

JOB VALUE OF 2021 CONSTRUCTION BUILDS

Apartment - \$128,973,461
Commercial - \$166,597,733
Residential - \$223,861,703



LIVE HERE

ONE-BED APARTMENT RENT

Denton - \$1,023

MEDIAN HOME PRICE

Denton - \$390,000

HOUSING OCCUPANCY

Occupied - 46,151 (93.5%)
Vacant - 5,477 (6.5%)

RACIAL DEMOGRAPHICS

White - 56%
Black - 10.3%
Hispanic - 25.3%
Other - 5.2%
Two or more races - 3.4%



WORK HERE

RESIDENTS WITH BACHELOR'S DEGREE

Texas - 20.0%
Denton - 27.9%

RESIDENTS WITH GRADUATE OR PROFESSIONAL DEGREE

Texas - 14.7%
Denton - 10.8%

LARGEST PUBLIC EMPLOYERS

University of North Texas System
Denton Independent School District
Denton County
Denton State Supported Living Center
City of Denton
Texas Woman's University System

LARGEST PRIVATE EMPLOYERS

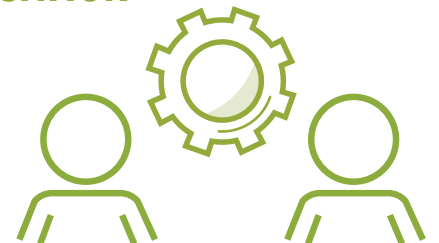
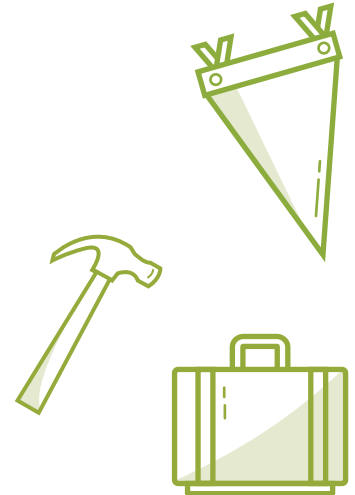
Peterbilt Motors Company
Texas Health Denton
Sally Beauty Holdings
Medical City Denton
SAFRAN Electrical & Power
Tetra Pak Materials

SALES TAX RATE

State - 6.25%
City - 1.5%
Denton County Transportation Authority - 0.5%

PROPERTY TAX RATE PER \$100 VALUATION

County - 0.2331
City - 0.560982
School District - 1.3620





DENTON EDUCATION AND TRAINING RESOURCES

PARTNERSHIPS & WORKFORCE DEVELOPMENT

CONTACT:

Denton Economic Development Partnership
(940) 382-7151 | www.dentonedp.com

Interns/New Graduate Talent

Find interns or recent graduates of Denton ISD, the University of North Texas, Texas Woman's University, or North Central Texas College.

Networking Events

Meet potential talent, other businesses, learn about advertising opportunities to hire employees, and form new business-to-business relationships.

Service Provider Referrals

The Partnership provides local referrals to any product or service your team needs – marketing, HVAC, equipment rental, and other industries.

DATA & INFORMATION

CONTACT:

City of Denton Economic Development Department
(940) 349-7776 | www.cityofdenton.com/EconomicDevelopment

Labor Market Information

Gain actionable insight through labor market information to help you understand and plan for workforce trends. Staff can provide industry pay scales, employment trends, and regional economic overviews.

Expansion Grants

Companies that significantly expand personnel operations may be eligible for performance-based grants.



HIRING

CONTACT:

Workforce Solutions for North Central Texas
(817) 695-9295 | www.dfwjobs.com

WorkInTexas.com

Share job postings on Texas' largest and most comprehensive job search listing site.

Job Fair Assistance

Host your job fair at a Workforce Solutions office or receive guidance on best practices.

Mobile Workforce Unit

Reserve Workforce Solutions' 38 ft. vehicle to bring additional recruiting capacity to your remote locations. The truck has internet access, 13 computer workstations, as well as interior and exterior screens.

On-The-Job Training

Benefit from a partial wage reimbursements while employees train on new technologies or learn new technical skills. Employers can receive up to a 50% of employee wages for up to six months.

Vocational Rehabilitation - Workforce Solutions Vocational Rehabilitation Business Services help you fill open positions at your business with qualified job seekers with disabilities, assess your workplace to remove barriers, and provide training and accommodation assistance.

Subsidized Work Employment (SWE)

Candidates recruited from Workforce Solutions' talent pool are paid and insured by the State. Employers can leverage the employee for up to 510 hours.

Fidelity Bonding

The fidelity bonding service helps at-risk job applicants get and keep a job. The Texas Workforce Commission (TWC) and the Workforce Development Boards offer free fidelity bonding services to reduce employers' concerns about hiring at-risk job applicants who cannot be bonded through other sources.

Work Opportunity Tax Credit (WOTC)

Employers who invest in job seekers who have consistently faced barriers to employment can apply for a payroll tax credit ranging from \$1,200 to \$9,600 per person. Employers must apply for and receive a certification verifying the new hire is a member of a targeted group before they can claim the tax credit.

Child Care Financial Assistance

Workforce Solutions provides child care financial assistance for parents who are looking for work, working, and/or going to school. Financial assistance for child care is subject to the availability of funds.



TRAINING

CONTACT:

Workforce Solutions for North Central Texas
(817) 695-9295 | www.dfwjobs.com

Skills Development Fund (SDF)

The SDF grant provides site-specific, customized training opportunities for Texas businesses and their employees to increase skill levels and wages of the Texas workforce.

Skills for Small Business (SSB)

Employees that have been with the company less than 12 months have a pool of \$1,800 and employees with more than 12 months of tenure have a pool of \$900. These funds cover training costs where classes are taken through a community college.

Critical Skills Initiative

The TWC provides employers the opportunity to develop new and expand existing registered apprenticeship programs with the help of this available funding. Programs must be registered through the U.S. Department of Labor.

Adult Education and Literacy (AEL)

Grants provide English language, math, reading, and writing instruction to help students acquire the skills needed to succeed in the workforce, earn a high school equivalency, or enter college or career training.

COUNSELING

CONTACT:

Small Business Development Center
(940) 498-6470 | www.nctc.edu/sbdc

New Business Counseling

Receive complimentary advising in such areas as new business feasibility and start-up, business plan preparation, financial management, and general management strategies for small businesses engaged in retail, service manufacturing and wholesale industries.

Competitive Business Success

Learn information concerning contracting with the government, international trade, intellectual property protection, and technology transfer.